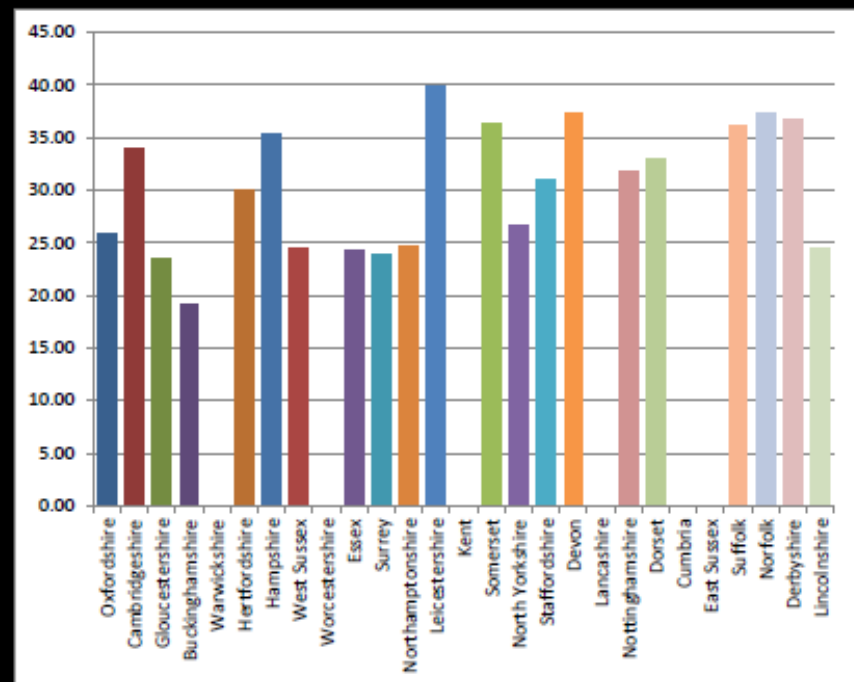
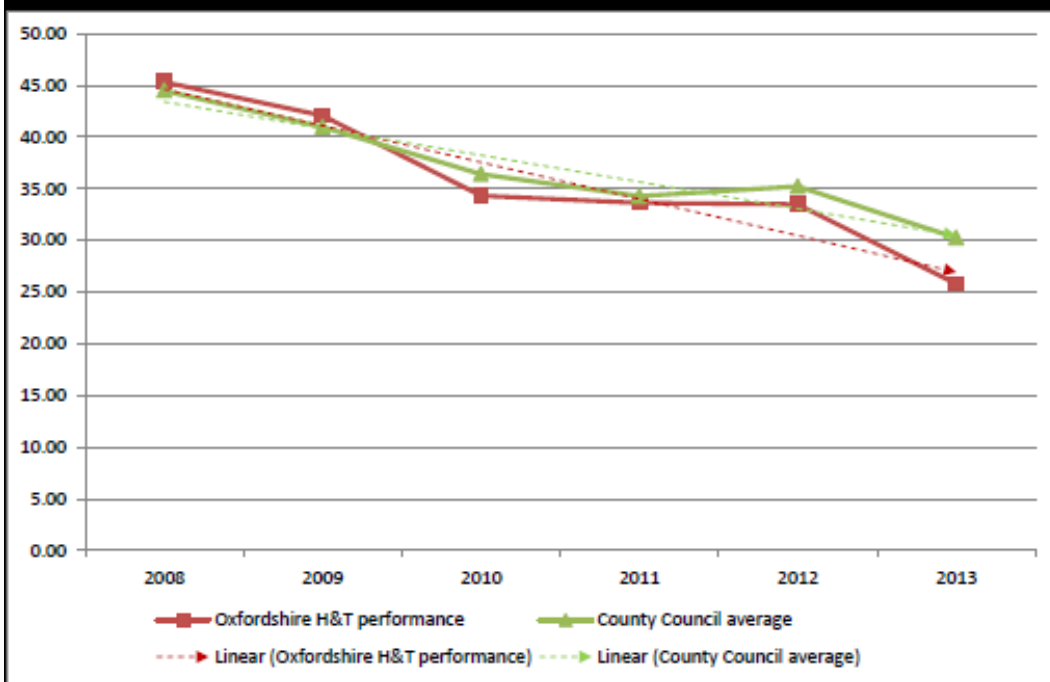


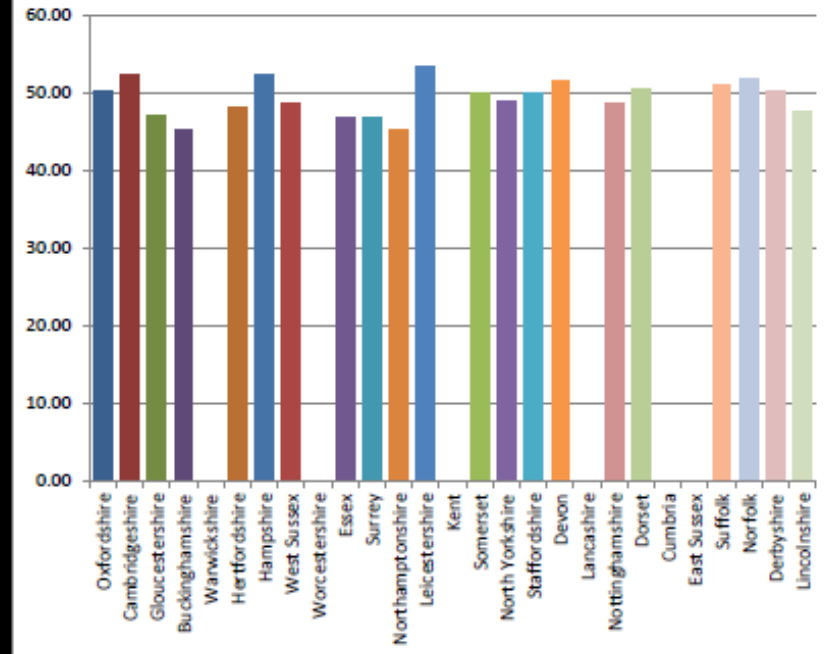
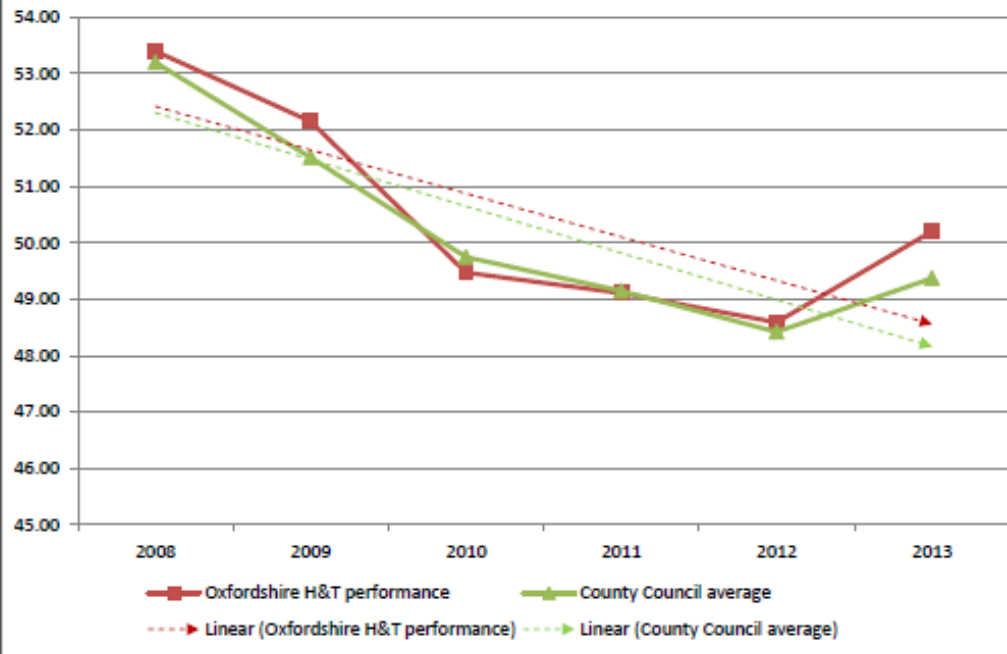
# Annex 3 – National Highways & Transport Benchmarking Survey

## Public Satisfaction of Condition of Highways



	2008	2009	2010	2011	2012	2013	2014	2015
Oxfordshire rank	7	12	16	12	13	14		
Oxfordshire perf.	45.31%	42.08%	34.33%	33.61%	33.50%	25.80%	0.00%	0.00%
Average perf.	44.49%	40.96%	36.42%	34.27%	35.23%	30.26%	0.00%	0.00%
Counties involved	14	23	24	22	22	21	0	0
	UQ	LQ	LQ	LQ	LQ	LQ	BQ	BQ

## Public Satisfaction of Local Authorities Highway Maintenance



	2008	2009	2010	2011	2012	2013	2014	2015
Oxfordshire rank	10	13	12	12	10	9		
Oxfordshire perf.	53.39%	52.15%	49.47%	49.11%	48.59%	50.20%	0.00%	0.00%
Average perf.	53.19%	51.51%	49.75%	49.14%	48.42%	49.37%	0.00%	0.00%
Counties involved	14	23	24	22	22	21	0	0

LQ	LQ	UQ	LQ	UQ	UQ	BQ	BQ
----	----	----	----	----	----	----	----